

SDM Design

By Dalia Martisiute
dalia@ninjutsu.it

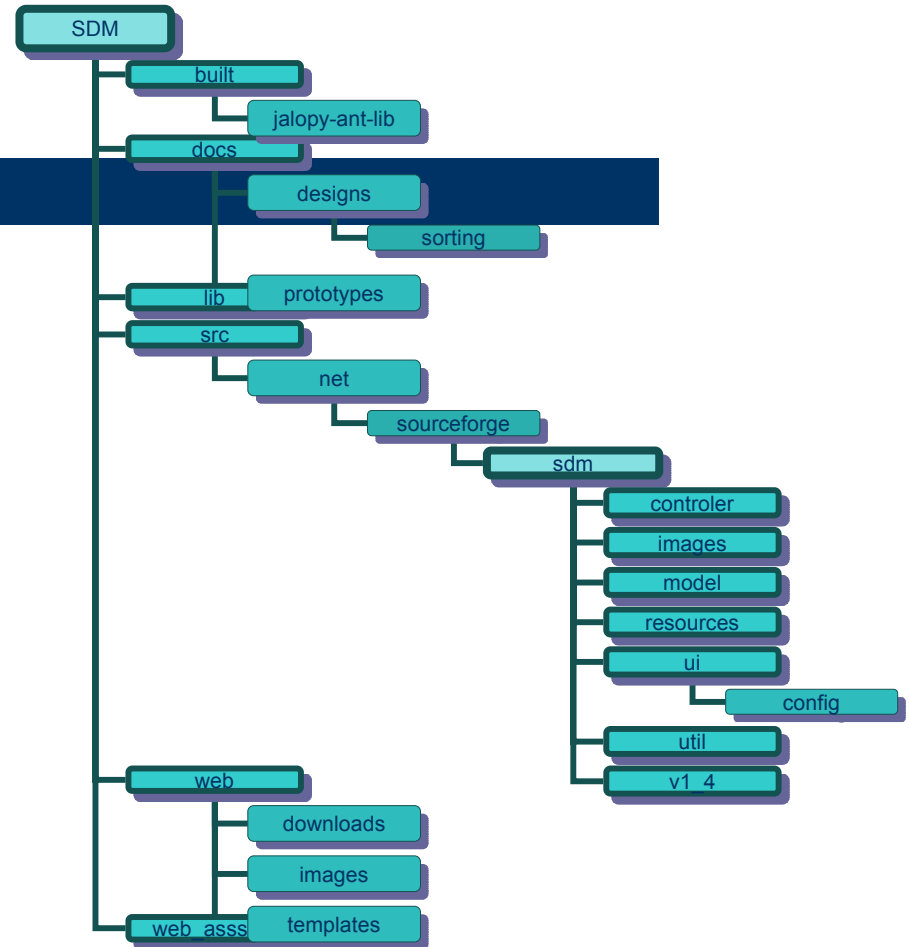


SDM v. 2.1

- SDM – Secure Password Manager
- Current release 2.1 (April 9, 2005):
 - ✓ GUI improvements
 - ✓ “Lock the application”

SDM structure

- built
- docs
- lib
- src
- web
- web_assets

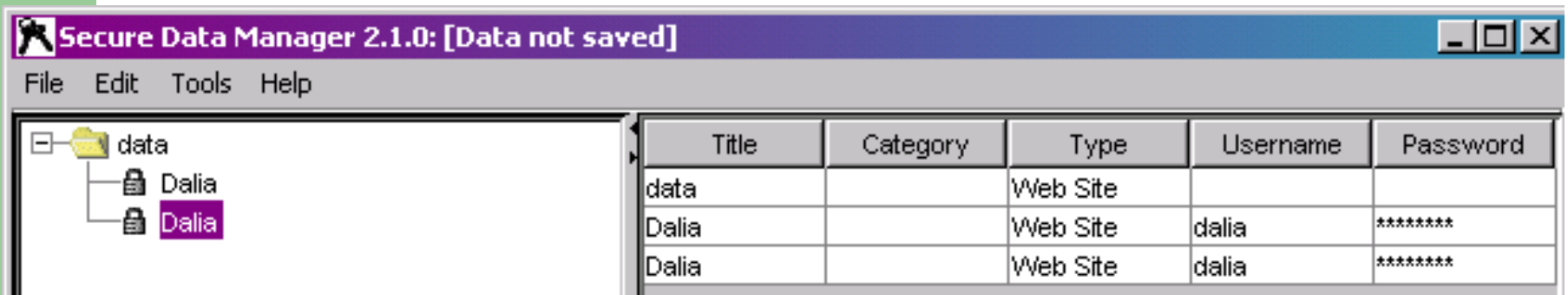


SDM source design

- SecureDataManager.java
- **contoller** → SDMController.java
- **model** → all observables, models
- **resources** → ResourceFactory.java, *.properties
- **ui** → SDMFrame.java, all managers
- **util** → CreatePwd.java, SDMExporter.java, DESwPbE.java ..
- **v_1.4** → XmlEncoder.java, XmlDecoder.java, PrintEntry.java, PrintTableContent.java,

My changes in SDM

- Password history:
 - ✓ keep history of password entries
 - ✓ change dates for each password
 - ✓ ensure that there are no duplicated passwords



SDM design of changes (1)

1. Check box “Save Password History” in Tools menu and in Preferences (near Hide Password check box)
2. When Save Password History is selected, then changing behavior
 - ✓ editing entry and changing only password
 - ✓ add new entry instead of updating the old one.
3. Save as usual file
4. Visualization of password history (as new entries in a table)

SDM design of changes (2)

1. “Save Password History”:
 - ✓ MenuManager.java (Menu→Tools→SavePasswordHistory)
 - ✓ PrintConfigPanel.java and PrintConfigPanelProperties.java (Menu→Tools→Preferences→Print)
2. Changing behavior
 - ✓ EditEntryPanel.java method updateEntry()
3. Saving
 - ✓ as usual file, no additional changes needed
4. Visualization
 - ✓ already done in (2) step (it adds new entry if only password is changed)

Changes in file structure

Adding classes:

- ✓ SavePasswordHistoryObservable.java in net.sourceforge.sdm.model

Changing:

- ✓ SDMControler.java in net.sourceforge.sdm.controller
- ✓ MenuManager.java in net.sourceforge.sdm.ui
- ✓ Resorce.properties in net.sourceforge.sdm.resources
- ✓ ResourceFactory.java in net.sourceforge.sdm.resources
- ✓ PrintConfigPanel.java in net.sourceforge.sdm.ui.config
- ✓ PrintConfigPanelProperties.java in net.sourceforge.sdm.ui.config

- ✓ EditEntryPanel.java in net.sourceforge.sdm.ui
(changing method updateEntry(), adding onlyPasswordChanged())

The End



Questions ?

dalia@ninjutsu.it